



Oxford
WE'VE GOT IT COVERED

**LOWPRO 100
NARROW TRENCH
COVER**

2022



tele cron
telecroatian network
www.telecron.net



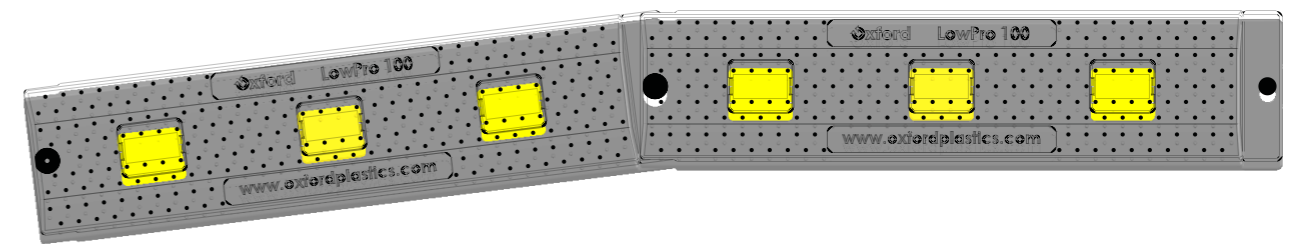
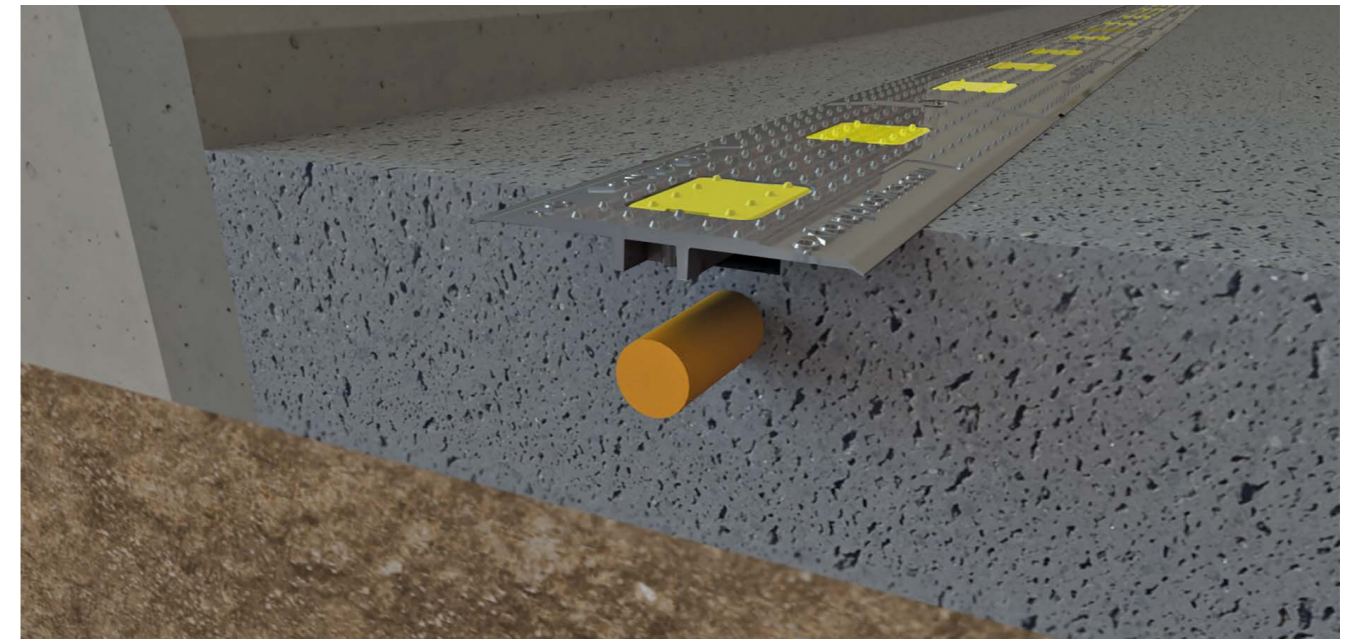
CONTENTS



PAGE

3	Features and benefits
4	What problems does it solve?
5	Dimensions and weights
6	Slip resistance
7	Safety
8	Installation
9	Recyclability
10	Contact information

FEATURES AND BENEFITS



APPLICATIONS

Narrow trench cover: 75 to 100mm wide trenches

Fibre optic cable installation & maintenance

Water service pipe installation & maintenance

For straight line excavations or curved excavations

SAFETY

Slots securely into the trench

Hi-vis inserts for visibility day or night

Highly slip resistant

Suitable for pedestrian traffic and vehicles

USAGE

LowPro 100s slot together using the pin and bucket connectors moulded into the product

Available in 20mm and 40mm depths

Made of recycled plastic

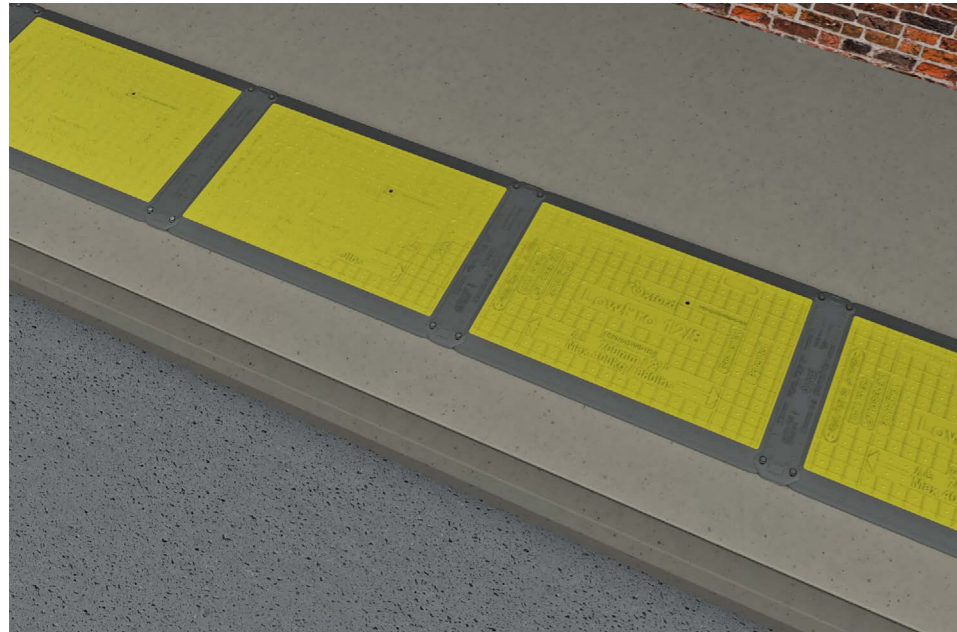
Can be recycled at end of life



WHAT PROBLEMS DOES IT SOLVE?

Before the LowPro 100, workers would either:

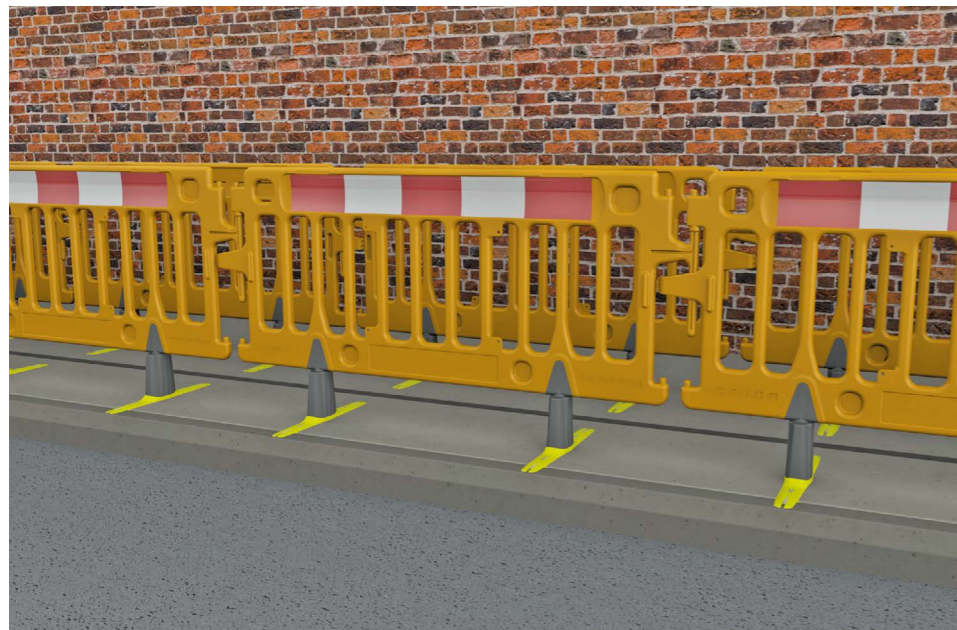
Use large trench covers



THE LOWPRO 100

Takes up less space in transport and storage
Is more cost effective

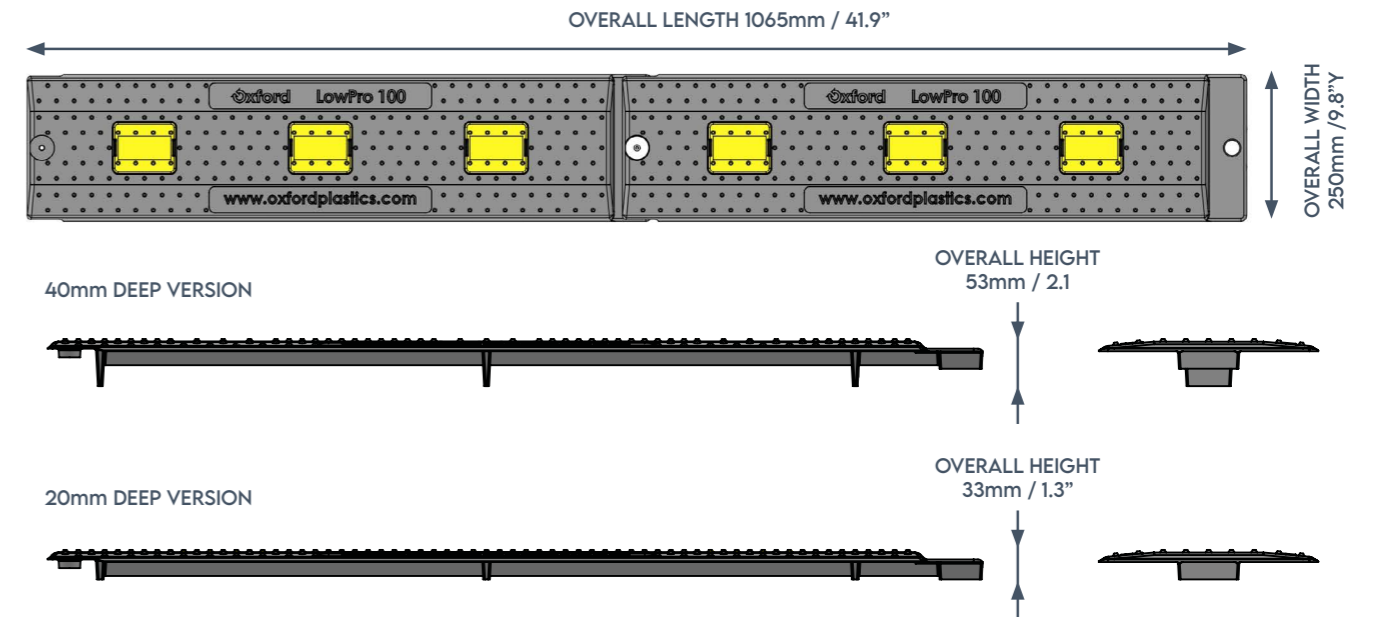
Barrier the excavated area



THE LOWPRO 100

Allows access on road and pavements
Is more cost effective

DIMENSIONS AND WEIGHTS

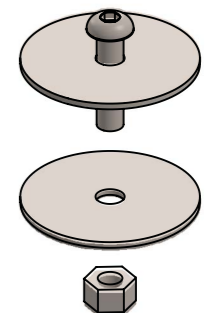


Part Name	LowPro 100® Narrow Trench Cover 40mm	LowPro 100® Narrow Trench Cover 20mm
Product code:	O761	O762
Height:	53mm	33mm
Width:	250mm	250mm
Length:	2080mm	2080mm
Weight:	6.51kg	6.45kg
QTY per pallet:	100 2m sections	100 2m sections

RECOMMENDED FIXINGS

Two 1m sections are supplied connected together using the following fixings. In most short-term applications, 2m LowPro 100 does not need to be connected any further. For long-term applications, 2m LowPro 100 can also be bolted together using the same recommended fixings:

- M6 x 25mm long button head screw x1
- M6 Nyloc locknut x 1
- M6 Penny washer Ø40mm x 2



SLIP RESISTANCE

Slip Resistance testing has been carried out by an independent test house, using standard HSE techniques in accordance with BS 7976-2:2002+A1:2013, and the UK Slip Resistance Guidelines (UKSRG) – Issue 5:2016, where appropriate.

Testing was carried out in 4 directions in wet and dry conditions, using a calibrated slip tester using Slider 55 and Slider 96.



CLASSIFICATIONS

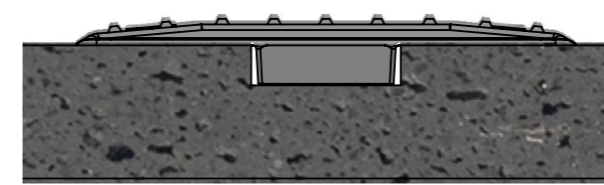
High Slip Potential
0-24

Medium Slip Potential
25-35

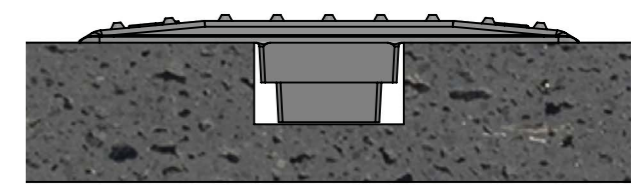
Low Slip Potential
36+

SLIDER 96 TEST RESULTS - DRY	Median Result	Classification
Parallel to traffic	75	LOW SLIP POTENTIAL
Perpendicular to traffic	82	LOW SLIP POTENTIAL
45 degrees to traffic	89	LOW SLIP POTENTIAL
10 degrees to traffic	77	LOW SLIP POTENTIAL
SLIDER 96 TEST RESULTS - WET		
Parallel to traffic	68	LOW SLIP POTENTIAL
Perpendicular to traffic	66	LOW SLIP POTENTIAL
45 degrees to traffic	59	LOW SLIP POTENTIAL
10 degrees to traffic	62	LOW SLIP POTENTIAL
SLIDER 55 TEST RESULTS - DRY		
Parallel to traffic	93	LOW SLIP POTENTIAL
Perpendicular to traffic	116	LOW SLIP POTENTIAL
45 degrees to traffic	105	LOW SLIP POTENTIAL
10 degrees to traffic	99	LOW SLIP POTENTIAL
SLIDER 55 TEST RESULTS - WET		
Parallel to traffic	52	LOW SLIP POTENTIAL
Perpendicular to traffic	54	LOW SLIP POTENTIAL
45 degrees to traffic	41	LOW SLIP POTENTIAL
10 degrees to traffic	38	LOW SLIP POTENTIAL

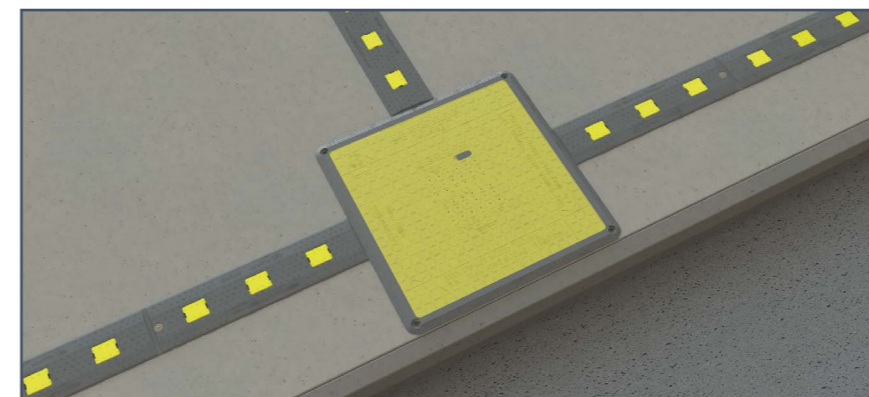
SAFETY



20mm DEEP VERSION



40mm DEEP VERSION



The LowPro 100 is suitable for pedestrians and vehicles and can be used on any trench depth. The recycled material is very tough, so it won't break even with extreme loads.

- Supports the load of any road vehicle. The narrow trench is much slimmer than the width of a tyre, and so the load is distributed and supported by the sides of the trench.
- Suitable for use in any trench depth: 20mm to 1000mm
- Slots securely into the trench
- Hi-vis inserts for visibility day or night
- Highly slip resistant

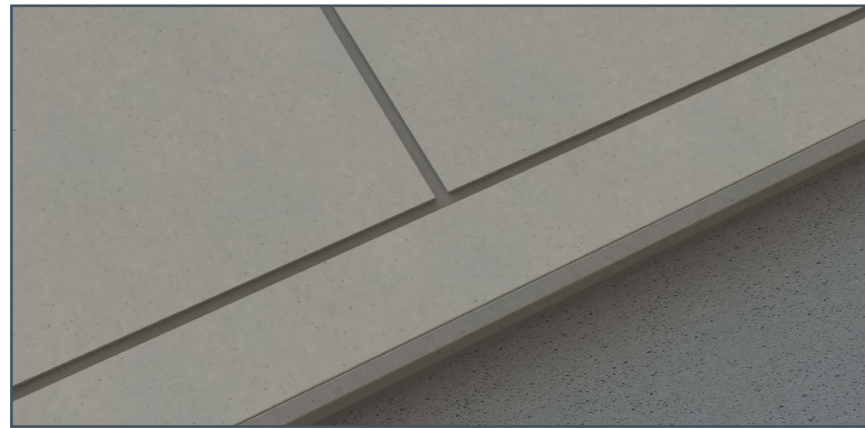
At a T junction, where the trench is directed into a residence, a LowPro 11/11 can be placed over the junction area.

The LowPro 11/11 is suitable for pedestrians and 1.6t vehicles over a 700mm span.

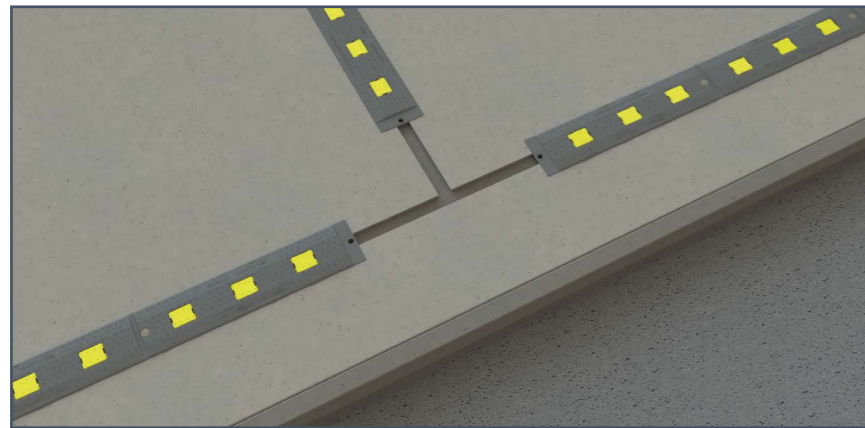
INSTALLATION

Follow the process below for safe and effective installations.

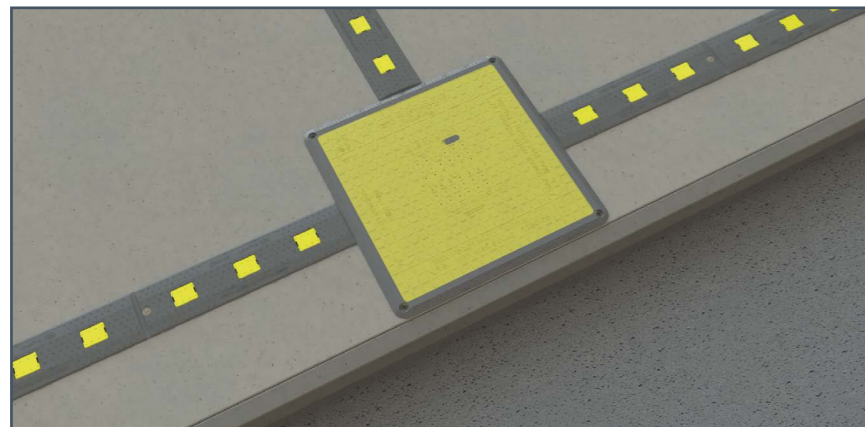
Risk assessments should be carried out to ensure the usage is suitable for the scenario.



For use on 75-100mm trenches on pavements and driveways.

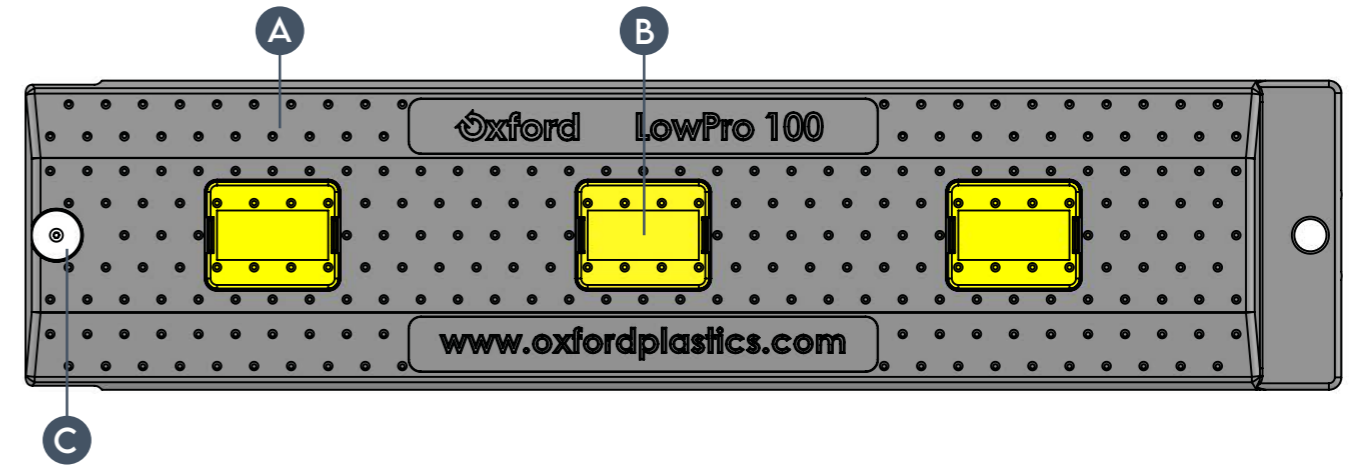


Slot the LowPro 100 into the trench.



At a T junction, where the trench is directed into a residence, place a LowPro 11/11 over the junction area.

RECYCLABILITY



MADE OF RECYCLED MATERIAL

Part name	Material	Product code
A LowPro 100	Recycled plastic	O761 / O762
B Hi-vis inserts	HDPE	
C Washers, bolt & nut	Steel	



CLOSED LOOP RECYCLING

End of life products can be returned to Oxford Plastics for recycling.

RIGHT TO REPAIR

LowPro 100 is a modular system. The hi-vis inserts and fixings are available for replacement.

ASSOCIATED PRODUCTS

Fibre requires smaller barriers than typical street works:

AVALON® BARRIER

PEDESTRIAN BARRIER

The Avalon is our most versatile and popular safety barrier. It is compliant with street works regulations and suitable for a wide range of indoor and outdoor pedestrian applications. Common uses include construction, excavation, street works, events and utilities sites.



AVALON 1m



AVALON 500mm

SAFEGATE®

MANHOLE BARRIER

The SafeGate barrier is designed for use around temporary excavations and commonly used in the communications industry.



Junctions require a trench cover over the top:

LOWPRO® 11/11 TRENCH COVER

TRENCH COVER

Pedestrian board with patented Flexi-Edge technology, suitable for the distributed load of a 1.6 tonnes vehicle over a 700mm trench.



WHAT IS NARROW TRENCHING?

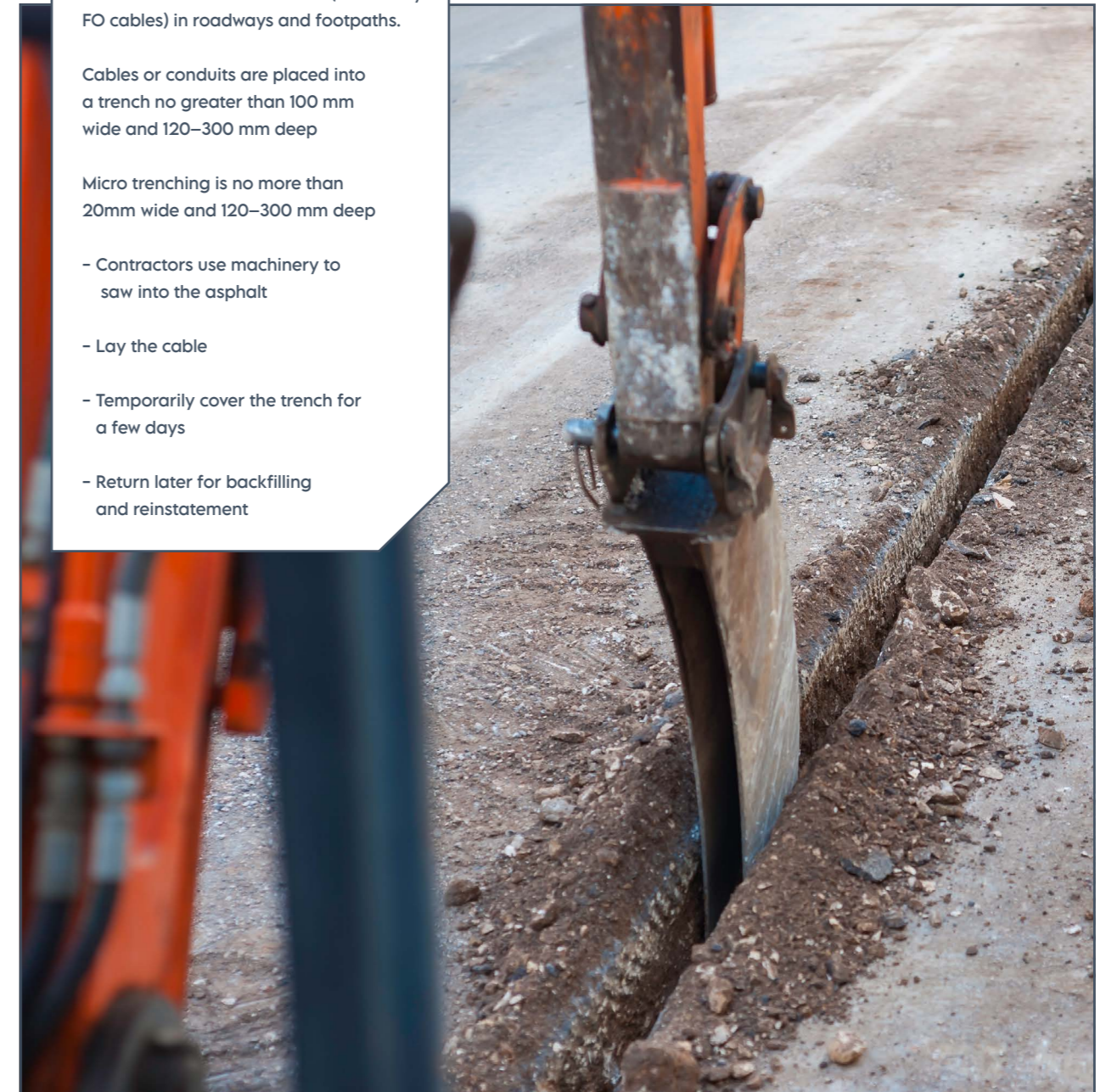
Water utility companies have service trenches which are 100mm wide, suitable for the LowPro 100

Narrow trenching is an installation method used for the distribution of communication infrastructure (commonly FO cables) in roadways and footpaths.

Cables or conduits are placed into a trench no greater than 100 mm wide and 120–300 mm deep

Micro trenching is no more than 20mm wide and 120–300 mm deep

- Contractors use machinery to saw into the asphalt
- Lay the cable
- Temporarily cover the trench for a few days
- Return later for backfilling and reinstatement



CONTACT INFORMATION



telecroatian network
www.telecron.net

UK & R.O.W

Oxford Plastic Systems Ltd
Unit T2, Enstone Business Park
Enstone, Chipping Norton
Oxfordshire
OX7 4NP
United Kingdom

sales@oxfordplastics.com
Tel: +44(0)1608 678888

USA

Oxford Plastic Systems LLC
1011 Centre Rd,
Suite 312,
Wilmington
DE
19805
USA

info@oxfordplasticsusa.com
1-800-567-9182