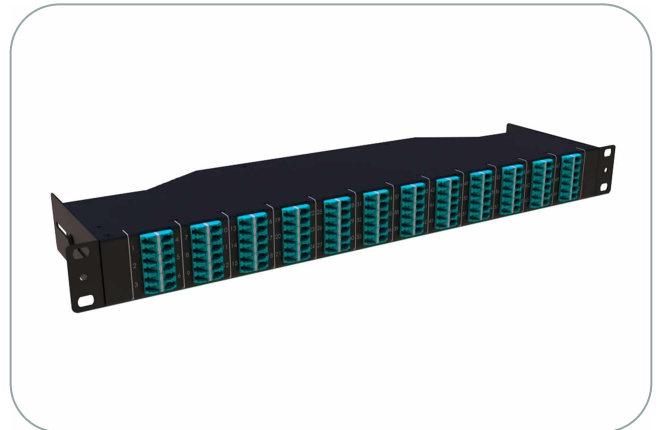


UltraSlim 1RU Panel BASE-12 144f

The UltraSlim 1RU Panel BASE-12 144f is specially designed to accommodate high density cabling in high end data center and telecommunication central office environment. The shallow depth of the UltraSlim Panel makes it suitable for low depth copper racking systems or telecommunications ODFs. Design accommodates extraction free shuttered LC QUAD adapters allowing for smooth patching and easy LC port access. The 1RU 19", 144 fiber MPO UltraSlim Panel contains factory controlled and tested MPO - LC assembly to deliver optical performance and reliability. Low loss Premium MPO and LC Premium versions are offered featuring significantly improved low insertion losses for demanding low power budget, high speed networks. Front and rear cable management facilitates provides a neat and tidy solution for managing incoming and exiting cables.



Features

- Compact - 1RU Size with 11.7 cm depth saves space and makes the panel compatible with copper racking system
- Ultra High Density 1RU panel can scale up to 144 discrete LC front ports and up to 12 MPO rear interfaces
- Designed around AFL's patented high density LC square quad adapter - no extraction tools required to access front LC ports
- Rapid Deployment - Factory pre-populated panel saves installation time - 1 x click to connect 12 fibers using MPO interface
- Rear and front fiber cable management accessories
- Available in OS1/2 and OM4 fiber grades
- Easy Installation - Open rear entry MPO ports guarantee easy cabling access and facilitates connection to MPO backbone trunks system
- Factory terminated and tested
- MPO components feature superior optical and mechanical properties
- Optimised Performance - Low loss MPO, discrete premium connectors and OM4 fiber assures low insertion losses and power penalties in tight power budget, high speed network environments
- Reliability - 100% Tested - Combination of high quality components and manufacturing quality control guarantees product to the highest standards

Applications

- Data communication applications

- Data Centre infrastructure
- Storage Area Network - Fiber Channel
- 40 and 100 Gbps Protocols compatible

Specifications

ELEMENT	CHARACTERISTIC
Fiber	OS1/OS2, OM4
Fiber Count	144
MPO Adapters	IEC 61754 & EIA/TIA 604-5 Body Colour: Black Polarity: A/C - Keyway up-Keyway down Body Colour: Grey Polarity: B - Keyway up-Keyway up
LC Adapter	LC Quad Body Colour:Aqua (MM)(OM4), Blue (SM/UPC), Green (SM/APC)
Terminations	MPO (12 Fiber Ferrule) with LC Enhanced, MPO Low Loss Premium (12 Fiber Ferrule) with LC Low Loss Premium
Storage Temperature	-20 ~ +60°C
Installation Temperature	-20 ~ +60°C
Operating Temperature	-20 ~ +60°C
Dimensions (W x D x H)	482 x 120 x 44 mm
Dimensions (Packaged) (W x D x H)	170 x 75 x 54 mm
Weight	2 kg
Weight (Packaged)	2.2 kg

Connector Performance

CONNECTOR MATING	IL AVERAGE	IL MAX	RETURN LOSS
MPO Premium (MM)	0.10 dB	0.35 dB	N/A
MPO (MM)	0.20 dB	0.60 dB	N/A
MPO Premium (SM)	0.10 dB	0.35 dB	>60 dB
MPO (SM)	0.25 dB	0.75 dB	>60 dB

OPTICAL PERFORMANCE	MM PREMIUM	MM ENHANCED	SM PREMIUM	SM ENHANCED	CONFORMANCE
IL Max/Master (Acceptance)	0.15 dB	0.25 dB	0.15 dB	0.25 dB	IEC 61300-3-4
Ave/Master	0.08 dB	0.15 dB	0.12 dB	0.18 dB	IEC 61300-3-4
Ave/Random	0.10 dB	0.20 dB	0.12 dB	0.18 dB	IEC 61300-3-34
RL(Min Acceptance)	NA	NA	55/65 dB*	55/65 dB*	IEC 61300-3-6

*UPC/APC

Ordering Information

Part Number	Description
A4USABBPVAV-01DA	AFL Ultraslim Panel 1RU Flat Front BK Premium LC - MPO M MM OM4 144F BASE12 Pol A/C
A7USABBPVAV-01DA	AFL Ultraslim Panel 1RU Flat Front BK Premium LC - MPO M SM G.657A1 144F BASE12 Pol A/C

A7USABBPBV-01DA

AFL Ultraslim Panel 1RU Flat Front BK Premium LCA - MPO M SM G.657A1 144F
BASE12 Pol A/C