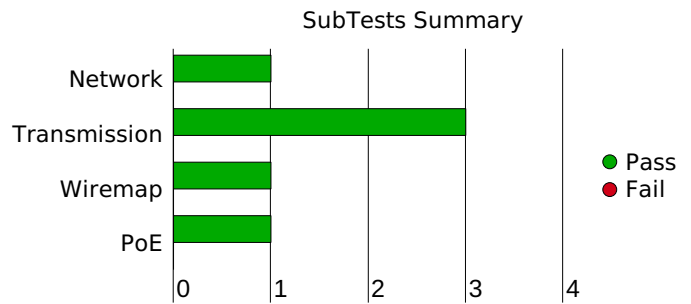
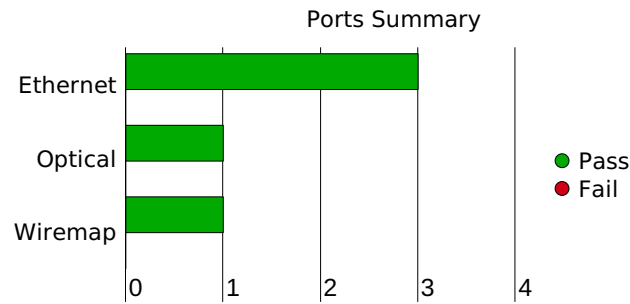


Project Name: Cable & PoE Test\_tests samples  
 Operator: Default Engineer  
 Contractor Name: Cable Test Ltd.  
 Phone: 00441315897  
 Email: John.Smith@trend-networks.Com  
 Address: Stokenchurch House oxford road | High Wycomb |  
 Buckinghamshire | HP14 3SX | UK

**Main Unit**  
 S/N: 1571010H/20440003  
 SW/Ver: 0.5.0-dev  
**Remote Unit**  
 S/N: 1571030J/20440010  
 SW/Ver: 16.7-1.2  
**Report Version**  
 1.6.0

## Cable & PoE Test Results Summary



Test Name	Result	Date (mm/dd/yyyy)	Port M / R	Ping4	Ping6	TraceRoute4	TraceRoute6	NetScan	Max Throughput	Uptime	Custom Data	Cable Data	Web Data	VoIP Data	Video Data	CCTV Data	PoELoad	Wiremap
Max10mCat5	✓	11/10/2020	RJ45 / RJ45	-	-	-	-	-	✓	-	-	-	-	-	-	-	-	✓
MaxThru100mCat5e	✓	11/10/2020	RJ45 / RJ45	-	-	-	-	-	✓	-	-	-	-	-	-	-	-	-
50mfiber max	✓	11/10/2020	SFP / SFP	-	-	-	-	-	✓	-	-	-	-	-	-	-	-	-
PoE load	✓	11/13/2020	RJ45 / RJ45	-	-	-	-	✓	-	-	-	-	-	-	-	-	✓	-

**Job notes:**

Test: Max10mCat5



Project Name: Cable & PoE Test\_tests samples  
 Test Date/Time: 11/10/2020 07:54:57 AM  
 Contractor Name: Cable Test Ltd.  
 Metadata Fields:

**Main Unit**  
 S/N: 1571010H/20440003  
 SW/V: 0.5.0-dev  
**Remote Unit**  
 S/N: 1571030J/20440010  
 SW/V: 16.7-1.2



Main Unit				
Port	RJ45			
Link Rate	10Gb/s			
Duplex	FD			
Pairs	1-2	3-6	4-5	7-8
Skew (ns) (Delay Variation)	0	2.5	-1.25	6.25
SNR Margin (dB)	5.40	5.00	5.00	4.80
PoE (V)	0.00	0.00	0.00	0.00
MAC	00:16:06:91:5f:01			
IPv4				
IPv6				
Tagged VLAN	0			

Remote Unit				
Port	RJ45			
Link Rate	10Gb/s			
Duplex	FD			
Pairs	1-2	3-6	4-5	7-8
Skew (ns) (Delay Variation)	0	8.75	5	15
SNR Margin (dB)	5.20	5.30	5.00	4.80
MAC	00:16:06:91:1f:12			

## Max Throughput

### Results

Test status	PASSED	
Start - End Time (mm/dd/yyyy hh:mm:ss)	11/10/2020 07:48:23 AM - 07:49:14 AM	
Elapsed Time (hh:mm:ss)	00:00:51	
Test Standard		
Frame Size (bytes)	Tx Speed (Gb/s)	Errors
64	10.000	0
256	10.000	0
512	10.000	0
1518	10.000	0
10000	-	-

Frame Size (bytes)	64	256	512	1518	10000	
Total Bandwidth (Gb/s)	10.0000	10.0000	10.0000	10.0000	-	
Usable Bandwidth (Gb/s)	7.6190	9.2754	9.6241	9.8700	-	
Network Overhead (Gb/s)	2.3810	0.7246	0.3759	0.1300	-	
Line Utilization (%)	100.000	100.000	100.000	100.000	-	
Tx Frame Count	148808032	45289398	23496006	8127349	-	
Rx Frame Count	148808032	45289398	23496006	8127349	-	
Error Count	0	0	0	0	-	
Error Ratio	0.000e+0	0.000e+0	0.000e+0	0.000e+0	-	
Propagation Delay Limit (RTT - Round Trip Time) (µs)	min	8.122	8.275	8.480	9.286	-
	avg	8.122	8.275	8.480	9.286	-
	max	8.128	8.282	8.486	9.293	-
Jitter (ns)	min	6.400	6.400	6.400	0.000	-
	avg	0.000	0.000	6.400	0.000	-
	max	6.400	6.400	6.400	6.400	-

### Setup

Link Speed	Auto
Frame Loss Type	IEEE 802.3an* (10G Copper, Quick)
Frame Loss Limit (%)	0
Frame Size (bytes)	0
Auto-adjust link speed	Enabled
Error check duration (hh:mm:ss)	00:00:10
Propagation Delay Limit (RTT - Round Trip Time) (ms)	1
Jitter limit (ms)	1

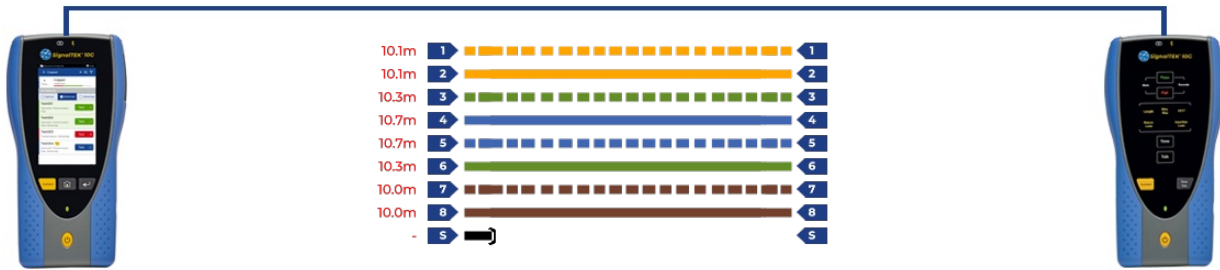
## Wiremap

### Results

Test status	PASSED							
Start - End Time (mm/dd/yyyy hh:mm:ss)	11/10/2020 07:30:27 AM - 07:30:30 AM							
Elapsed Time (hh:mm:ss)	00:00:03							
Cable Length (m/ft)	10 / 32.81							
Remote ID	1							
Cable Test Results	STRAIGHT Cat5							
Pair	1-2		3-6		4-5		7-8	
Length (m)	10.1		10.3		10.7		10	
Pin	1	2	3	4	5	6	7	8
Voltage	0	0	0	0	0	0	0	0

### Interface Status

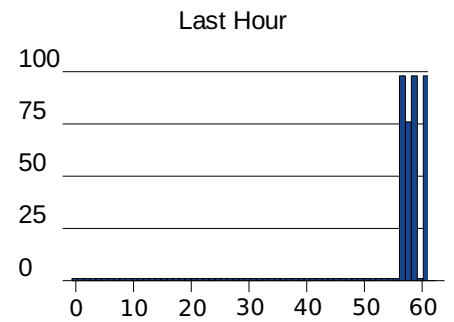
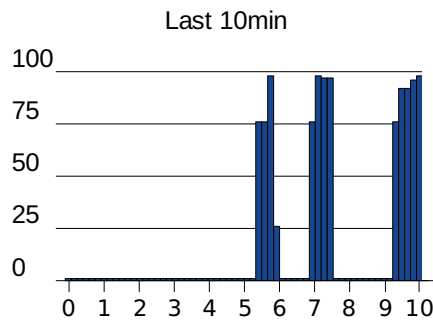
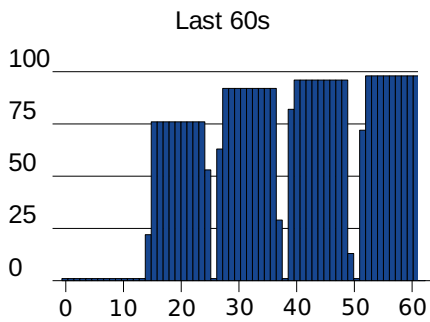
Port	Wiremap
Pairs	Unknown
Remote ID	1
Voltage (V)	0
Link Ability	-



### Setup

Cable Type	Cat5
Display Preference	568B
Shield Type	UTP
NVP or Custom NVP	72
Split Pair	Enabled
Xover Allowed	Enabled

### Line Utilization %



## MAC Statistics

Utilization	
Unicast	5.42840e+8
Broadcast	0
Multicasts	0
Total Rx Frames	5.42840e+8
Total Rx Bytes	9.41279e+10
Frame Errors	7
Max Frames per Second	14880953
Current Data Rate	2.6633 Gb/s
Average Data Rate	5.5779 Gb/s
Max Data Rate	9.8700 Gb/s
Current Utilization	53.266%
Average Utilization	111.559%
Max Utilization	197.399%

Size	
< 64	0
64 - 127	446430961
128 - 255	0
256 - 511	45289398
512 - 1023	23496241
1024 - 1279	27623274
1280 - 1518	0
1519 - 1522	0
> 1522	0
Errors	
Bad FCS	7
Undersized Frames	0
Oversized Frames	0
Jabbers	0
Bad Length	0



Project Name: Cable & PoE Test\_tests samples  
 Test Date/Time: 11/10/2020 07:57:46 AM  
 Contractor Name: Cable Test Ltd.  
 Metadata Fields:

**Main Unit**  
 S/N: 1571010H/20440003  
 SW/V: 0.5.0-dev  
**Remote Unit**  
 S/N: 1571030J/20440010  
 SW/V: 16.7-1.2



Main Unit				
Port	RJ45			
Link Rate	5Gb/s			
Duplex	FD			
Pairs	1-2	3-6	4-5	7-8
Skew (ns) (Delay Variation)	0	-2.5	-2.5	-11.25
SNR Margin (dB)	6.00	3.30	4.90	6.70
PoE (V)	0.00	0.00	0.00	0.00
MAC	00:16:06:91:5f:01			
IPv4				
IPv6				
Tagged VLAN	0			

Remote Unit				
Port	RJ45			
Link Rate	5Gb/s			
Duplex	FD			
Pairs	1-2	3-6	4-5	7-8
Skew (ns) (Delay Variation)	0	-1.25	-1.25	-8.75
SNR Margin (dB)	5.80	3.70	5.60	7.10
MAC	00:16:06:91:1f:12			

## Max Throughput

### Results

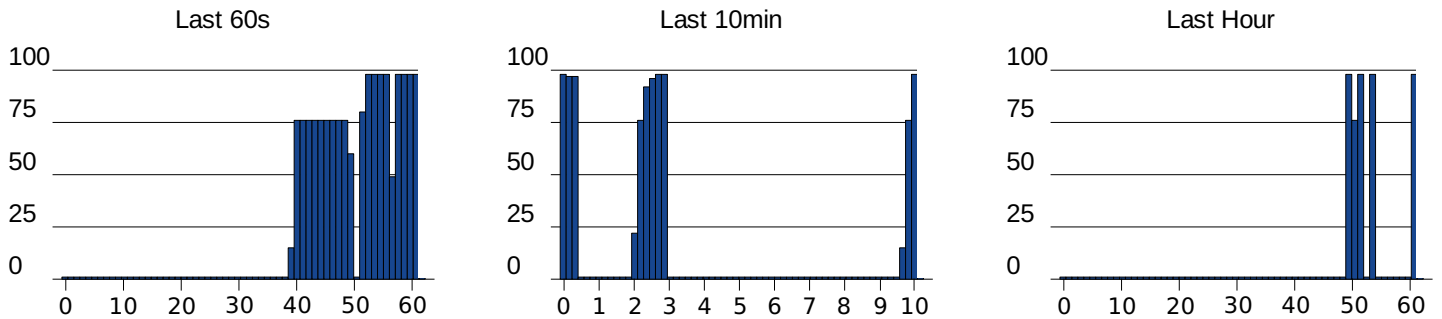
Test status	PASSED	
Start - End Time (mm/dd/yyyy hh:mm:ss)	11/10/2020 07:55:54 AM - 07:56:21 AM	
Elapsed Time (hh:mm:ss)	00:00:27	
Test Standard		
Frame Size (bytes)	Tx Speed (Gb/s)	Errors
64	5.000	0
256	-	-
512	-	-
1518	5.000	0
10000	-	-

Frame Size (bytes)	64	256	512	1518	10000
Total Bandwidth (Gb/s)	5.0000	-	-	5.0000	-
Usable Bandwidth (Gb/s)	3.8095	-	-	4.9350	-
Network Overhead (Gb/s)	1.1905	-	-	0.0650	-
Line Utilization (%)	100.000	-	-	100.000	-
Tx Frame Count	74404016	-	-	4063670	-
Rx Frame Count	74404016	-	-	4063670	-
Error Count	0	-	-	0	-
Error Ratio	0.000e+0	-	-	0.000e+0	-
Propagation Delay Limit (RTT - Round Trip Time) (µs)	min	13.222	-	15.552	-
	avg	13.222	-	15.552	-
	max	13.222	-	15.552	-
Jitter (ns)	min	0.000	-	0.000	-
	avg	0.000	-	0.000	-
	max	0.000	-	0.000	-

### Setup

Link Speed	Auto
Frame Loss Type	IEEE 802.3an* (10G Copper, Quick)
Frame Loss Limit (%)	0
Frame Size (bytes)	0
Auto-adjust link speed	Enabled
Error check duration (hh:mm:ss)	00:00:10
Propagation Delay Limit (RTT - Round Trip Time) (ms)	1
Jitter limit (ms)	1

## Line Utilization %



## MAC Statistics

Utilization	
Unicast	7.84690e+7
Broadcast	0
Multicasts	0
Total Rx Frames	7.84690e+7
Total Rx Bytes	1.09307e+10
Frame Errors	0
Max Frames per Second	7440477
Current Data Rate	892.0618 Mb/s
Average Data Rate	361.3441 Mb/s
Max Data Rate	4.9350 Gb/s
Current Utilization	17.841%
Average Utilization	7.227%
Max Utilization	98.700%

Size	
< 64	0
64 - 127	74405309
128 - 255	0
256 - 511	0
512 - 1023	0
1024 - 1279	4063711
1280 - 1518	0
1519 - 1522	0
> 1522	0
Errors	
Bad FCS	0
Undersized Frames	0
Oversized Frames	0
Jabbers	0
Bad Length	0



Test: 50mfiber max



Project Name: Cable & PoE Test\_tests samples  
 Test Date/Time: 11/10/2020 08:25:24 AM  
 Contractor Name: Cable Test Ltd.  
 Metadata Fields:

**Main Unit**  
 S/N: 1571010H/20440003  
 SW/V: 0.5.0-dev  
**Remote Unit**  
 S/N: 1571030J/20440010  
 SW/V: 16.7-1.2



Main Unit	
Port	SFP
Line Rate	10Gb/s FD
Vendor Info	APAC Opto
Module	SFP+
SFP Tx Power(dBm)	-3.52
SFP Rx Power(dBm)	-1.77
SFP Temp (°C / °F)	40.66 / 105.20
Rx min power limit (dBm)	-9.9
Rx max power limit (dBm)	0

Remote Unit	
Port	SFP
Line Rate	10Gb/s FD
Vendor Info	APAC
Module	SFP+
SFP Tx Power(dBm)	-2.91
SFP Rx Power(dBm)	-1.44
SFP Temp (°C / °F)	30.31 / 86.56
Rx min power limit (dBm)	-9.9
Rx max power limit (dBm)	0

## Max Throughput

### Results

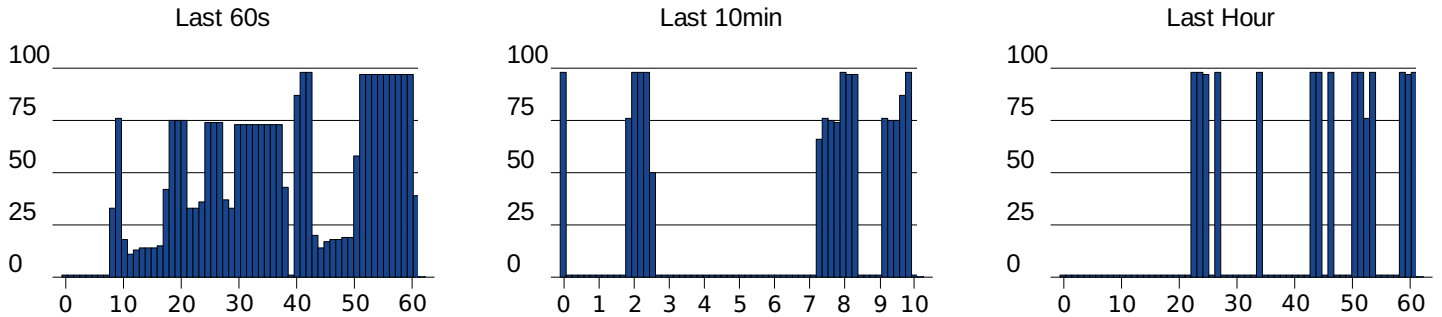
Test status		PASSED	
Start - End Time (mm/dd/yyyy hh:mm:ss)		11/10/2020 08:21:31 AM - 08:22:27 AM	
Elapsed Time (hh:mm:ss)		00:00:56	
Test Standard			
Frame Size (bytes)	Tx Speed (Gb/s)	Errors	
64	9.700	0	
256	-	-	
512	-	-	
1518	9.900	0	
10000	-	-	

Frame Size (bytes)	64	256	512	1518	10000
Total Bandwidth (Gb/s)	9.7000	-	-	9.9000	-
Usable Bandwidth (Gb/s)	7.3905	-	-	9.7712	-
Network Overhead (Gb/s)	2.3095	-	-	0.1287	-
Line Utilization (%)	97.000	-	-	99.000	-
Tx Frame Count	144343787	-	-	8046070	-
Rx Frame Count	144343787	-	-	8046070	-
Error Count	0	-	-	0	-
Error Ratio	0.000e+0	-	-	0.000e+0	-
Propagation Delay Limit (RTT - Round Trip Time) (µs)	min	4.064	-	5.222	-
	avg	4.070	-	5.235	-
	max	4.083	-	5.254	-
Jitter (ns)	min	0.000	-	0.000	-
	avg	0.000	-	0.000	-
	max	12.800	-	19.200	-

### Setup

Link Speed	Auto
Frame Loss Type	IEEE 802.3ae* (10G Fiber, Quick)
Frame Loss Limit (%)	0
Frame Size (bytes)	0
Auto-adjust link speed	Enabled
Error check duration (hh:mm:ss)	00:00:10
Propagation Delay Limit (RTT - Round Trip Time) (ms)	1
Jitter limit (ms)	1

## Line Utilization %



## MAC Statistics

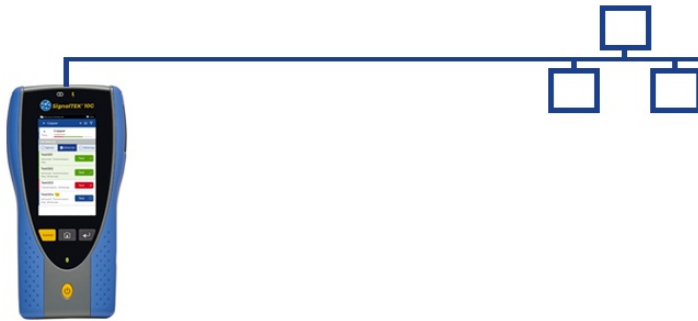
Utilization	
Unicast	3.14348e+8
Broadcast	0
Multicasts	0
Total Rx Frames	3.14348e+8
Total Rx Bytes	3.67690e+10
Frame Errors	0
Max Frames per Second	14880581
Current Data Rate	0 b/s
Average Data Rate	4.5961 Gb/s
Max Data Rate	9.8700 Gb/s
Current Utilization	0.000%
Average Utilization	0.000%
Max Utilization	0.000%

Size	
< 64	0
64 - 127	302895908
128 - 255	0
256 - 511	0
512 - 1023	0
1024 - 1279	11451672
1280 - 1518	0
1519 - 1522	0
> 1522	0
Errors	
Bad FCS	0
Undersized Frames	0
Oversized Frames	0
Jabbers	0
Bad Length	0



Project Name: Cable & PoE Test\_tests samples  
 Test Date/Time: 11/13/2020 10:41:28 AM  
 Contractor Name: Cable Test Ltd.  
 Metadata Fields:

**Main Unit**  
 S/N: 1571010H/20440003  
 SW/V: 0.5.1-dev  
**Remote Unit**  
 S/N:  
 SW/V:



Main Unit				
Port	RJ45			
Link Rate	5Gb/s			
Duplex	FD			
Pairs	<b>1-2</b>	<b>3-6</b>	<b>4-5</b>	<b>7-8</b>
Skew (ns) (Delay Variation)	0	0	-5	-12.5
SNR Margin (dB)	9.00	7.50	9.60	9.60
PoE (V)	51.90	51.90	0.00	0.00
MAC	00:16:06:91:5f:01			
IPv4	192.168.1.81			
IPv6				
Tagged VLAN	0			

Remote Unit				
Port	RJ45			
Link Rate				
Duplex				
Pairs	<b>1-2</b>	<b>3-6</b>	<b>4-5</b>	<b>7-8</b>
Skew (ns) (Delay Variation)				
SNR Margin (dB)				
MAC				

## Main Unit Link Discovery

### Device Port Details # 1

<b>System Name</b>	-		
<b>System Description</b>	-		
<b>Port Description</b>	mg8 FiveGigabitEthernet8		
<b>IP Address</b>	-	<b>MAC</b>	08:BD:43:75:3F:7A
<b>Capabilities</b>	-	<b>VLAN ID</b>	1
<b>PoE Type</b>	POE Type	<b>Protocol</b>	LLDP

## IP Details

### IPv4

<b>Status</b>	<b>IP assigned successfully</b>
Address	192.168.1.81
Netmask	255.255.255.0
Gateway	192.168.1.254
DNS Primary	192.168.1.254
DNS Secondary	-
DHCP Server	192.168.1.254

## Net Scan

### Results

<b>Test status</b>	<b>PASSED</b>
Start - End Time (mm/dd/yyyy hh:mm:ss)	11/13/2020 10:26:50 AM - 10:27:20 AM
Elapsed Time (hh:mm:ss)	00:00:30
No. of Conflict IP devices	0
IPv4 hosts	9
IPv6 hosts	0

IP Address	MAC Address	Vendor
192.168.1.1	4c:9e:ff:f4:78:7a	Zyxel Communications Corporation
192.168.1.64	a8:e2:c1:48:60:01	Texas Instruments
192.168.1.70	f4:8c:50:0c:38:7a	Intel Corporate
192.168.1.74	f0:78:07:c1:f2:d4	Apple, Inc.
192.168.1.94	00:14:ee:0a:1f:83	Western Digital Technologies, Inc.
192.168.1.100	00:0e:c6:bc:01:8f	ASIX ELECTRONICS CORP.
192.168.1.84	0c:1c:57:b1:28:b7	Texas Instruments
192.168.1.254	ac:3b:77:cf:53:dc	Sagemcom Broadband SAS
192.168.1.65	4c:b1:99:06:17:47	Apple, Inc.

### Setup

Scan network address range	192.168.1.81/24
----------------------------	-----------------

# PoE Load

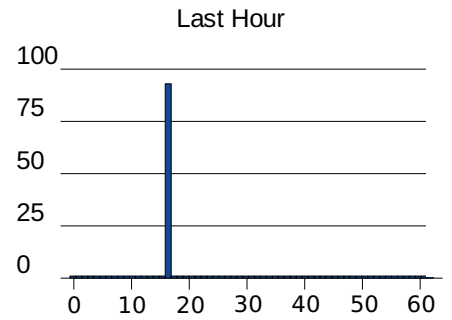
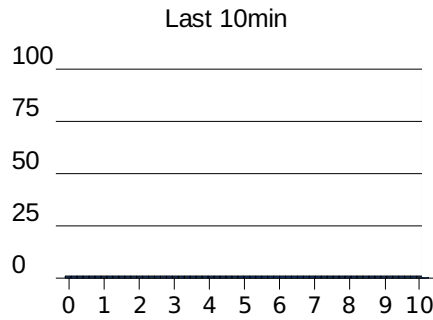
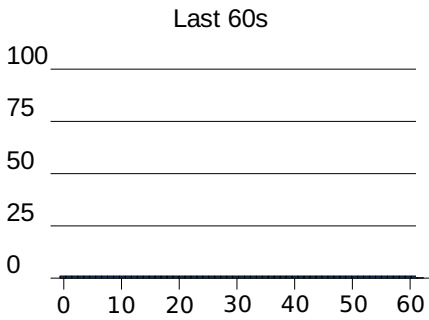
## Results

<b>Test status</b>	<b>PASSED</b>
Start - End Time (mm/dd/yyyy hh:mm:ss)	11/13/2020 10:35:21 AM - 10:35:25 AM
Elapsed Time (hh:mm:ss)	00:00:04
PoE Class Achieved	Class 4
Max Power Achieved (W)	29.8
Voltage at Max Power (V)	51.90
PoE Standard	802.3at
Max Power Cable Loss (W)	-

## Setup

PoE Standard Limit	Enabled
Power Limit	IEEE802.3

## Line Utilization %



## MAC Statistics

Utilization	
Unicast	9.64000e+2
Broadcast	538
Multicasts	1815
Total Rx Frames	3.31700e+3
Total Rx Bytes	5.77318e+5
Frame Errors	611
Max Frames per Second	135
Current Data Rate	1.0240 kb/s
Average Data Rate	3.8010 kb/s
Max Data Rate	172.8080 kb/s
Current Utilization	0.000%
Average Utilization	0.000%
Max Utilization	0.000%

Size	
< 64	0
64 - 127	2234
128 - 255	293
256 - 511	536
512 - 1023	254
1024 - 1279	0
1280 - 1518	0
1519 - 1522	0
> 1522	0
Errors	
Bad FCS	0
Undersized Frames	0
Oversized Frames	0
Jabbers	0
Bad Length	611